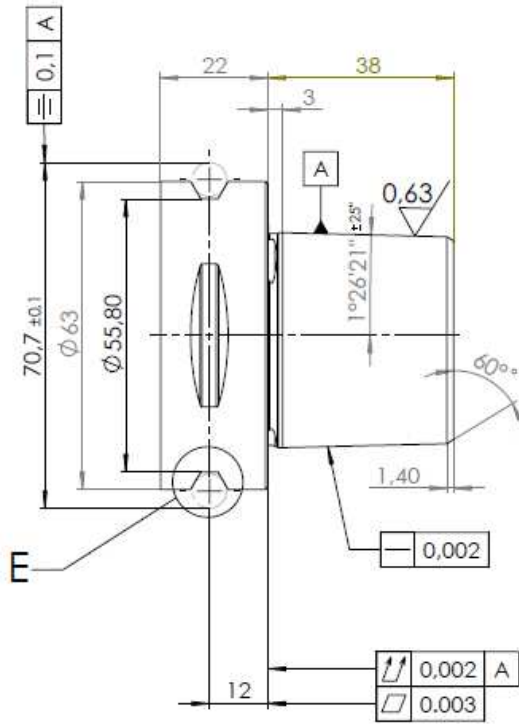
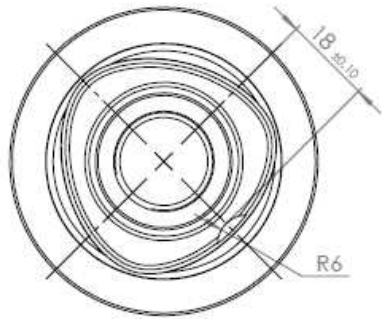
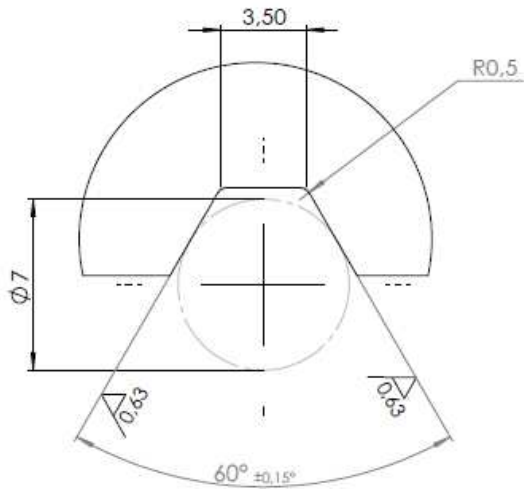


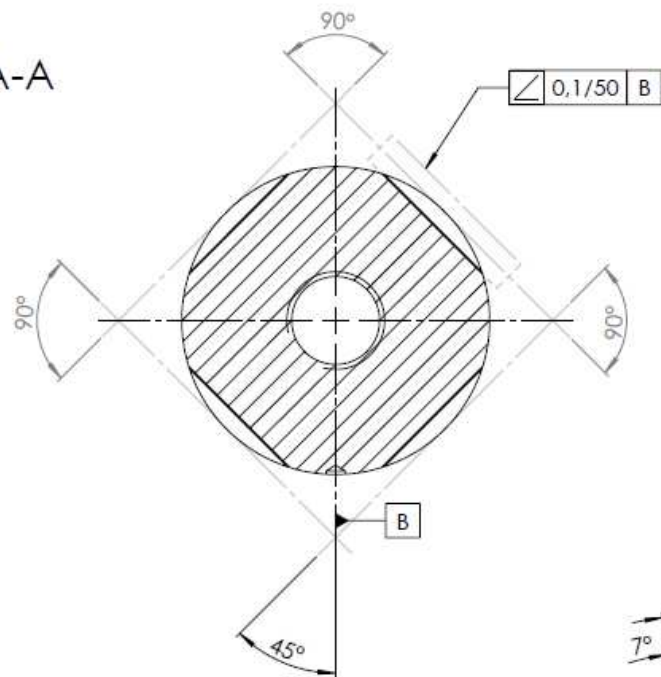
|             |             |                               |                     |                      |          |          |            |                |
|-------------|-------------|-------------------------------|---------------------|----------------------|----------|----------|------------|----------------|
| Pozycja     |             | Nazwa                         |                     | il. szt.             | Material | Masa     | Symbol/KTM |                |
|             |             | Chwyt Capto C6 wg ISO 26623-1 |                     |                      |          |          |            |                |
| Nr zmiany   | Ilość zmian | Nr kart zm.                   | Zamiast             | Powinno być          |          | Podpis   | Data       |                |
|             |             |                               |                     |                      |          |          |            |                |
| Podziałka   |             | Zastęp rys. Nr                | Zast. przez rys. Nr | Arkusz 1<br>il. ark. |          | Służy do |            |                |
| ZM<br>KOLNO |             | Konstruował                   | A. Górski           | Podpis               | 12.07.17 | Cecha    |            | Nr rys w arch. |
|             |             | Sprawdził                     | B. Jerzyło          |                      | 12.07.17 |          |            |                |
|             |             | Zatwierdził                   | B. Jerzyło          |                      | 12.07.17 |          |            |                |

E  
SKALA 5 : 1



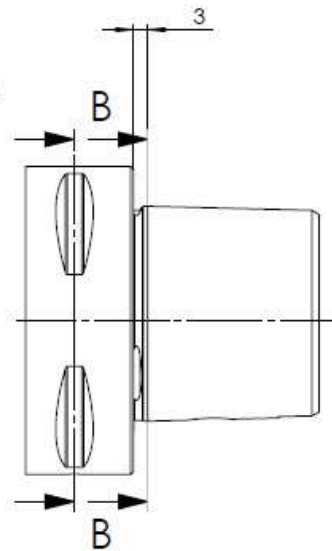
|             |             |                               |          |                     |             |          |          |            |                |
|-------------|-------------|-------------------------------|----------|---------------------|-------------|----------|----------|------------|----------------|
| Pozycja     |             | Nazwa                         |          |                     | il. szt.    | Materiał | Masa     | Symbol/KTM |                |
|             |             | Chwyt Capto C6 wg ISO 26623-1 |          |                     |             |          |          |            |                |
| Nr zmiany   |             |                               |          |                     | Powinno być |          |          | Podpis     | Data           |
|             | Ilość zmian | Nr kart zm.                   |          | Zamiat              |             |          |          |            |                |
| Podziałka   |             | Zastęp rys. Nr                |          | Zast. przez rys. Nr |             | Arkusz 1 |          | Służy do   |                |
|             |             |                               |          |                     |             | il. ark. |          |            |                |
| ZM<br>KOLNO |             | Konstruował                   | Nazwisko | A. Górski           | Podpis      |          | Data     | Cecha      | Nr rys w arch. |
|             |             | Sprawdził                     |          | B. Jerzyło          |             |          | 12.07.17 |            |                |
|             |             | Zatwierdził                   |          | B. Jerzyło          |             |          | 12.07.17 |            |                |

A-A



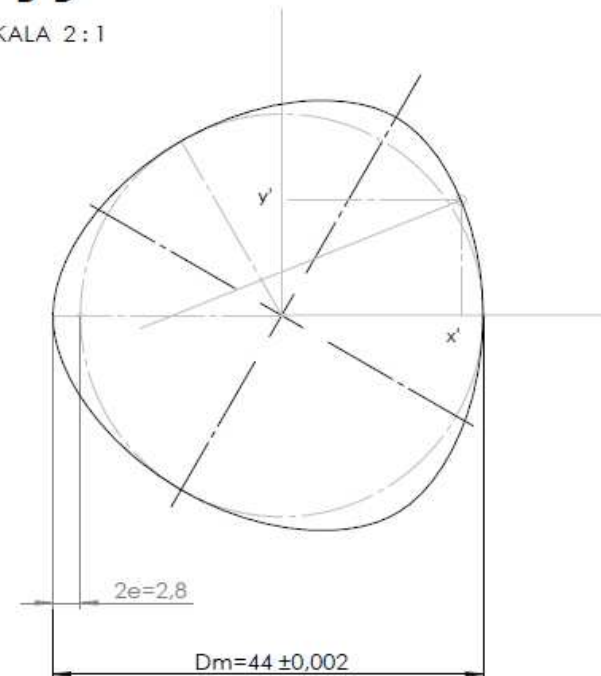
A

A



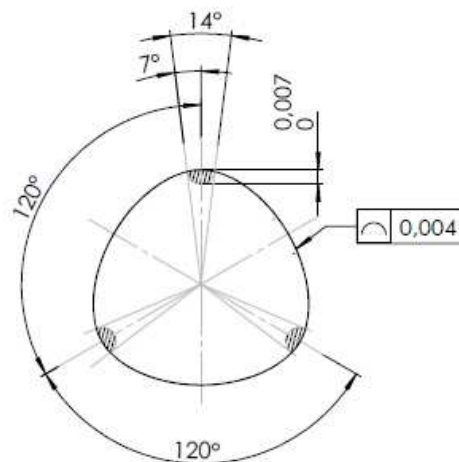
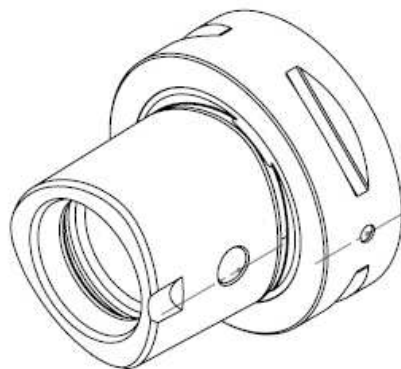
B-B

SKALA 2 : 1



$$x' = Dm/2 \times \cos \zeta - 2 \times e \times \cos(2\zeta) + e \times \cos(4\zeta)$$

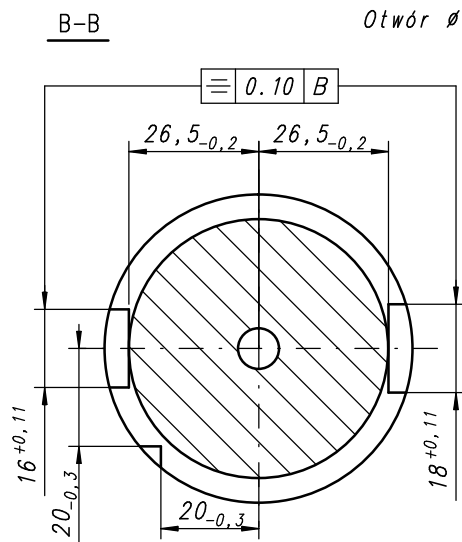
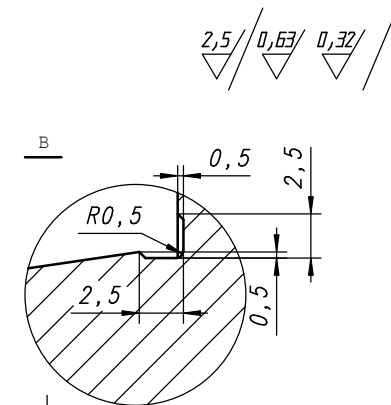
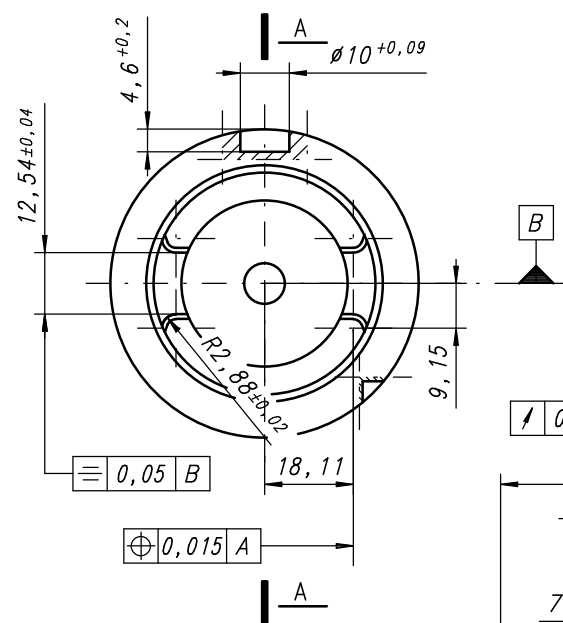
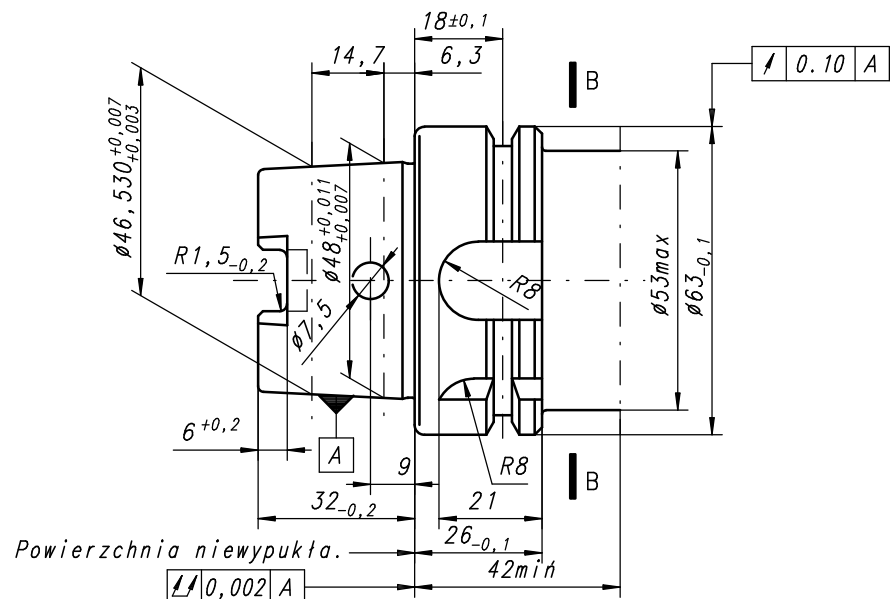
$$y' = Dm/2 \times \sin \zeta - 2 \times e \times \sin(2\zeta) + e \times \sin(4\zeta)$$



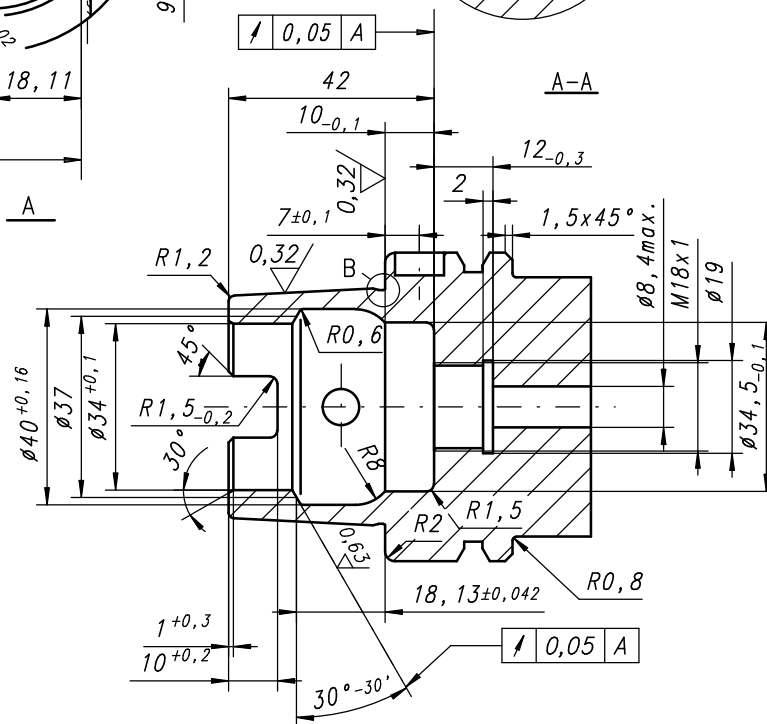
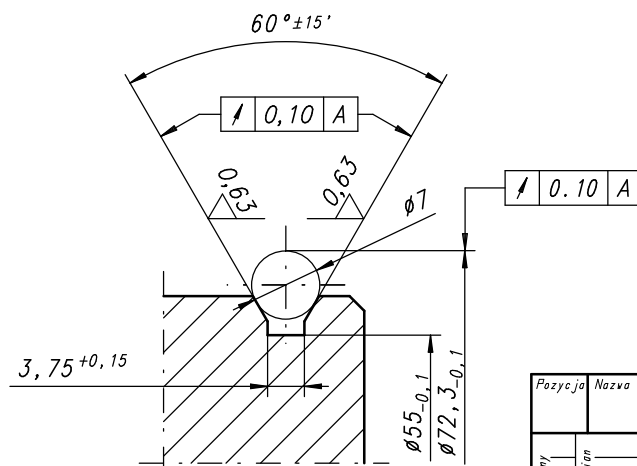
| Pozycja   | Nazwa                         | il. szt.            | Materiał    | Masa     | Symbol/KTM     |
|-----------|-------------------------------|---------------------|-------------|----------|----------------|
|           | Chwył Capto C6 wg ISO 26623-1 |                     |             |          |                |
| Nr zmiany | Nr kart zm.                   | Zamiat              | Powinno być | Podpis   | Data           |
|           |                               |                     |             |          |                |
| Podziałka | Zastęp rys. Nr                | Zast. przez rys. Nr | Arkusz 1    | Służy do |                |
|           |                               |                     | il. ark.    |          |                |
| ZM        | Konstruował                   | A. Górski           | Podpis      | Data     | Cecha          |
| KOLNO     | Sprawdził                     | B. Jerzyło          |             | 12.07.17 |                |
|           | Zatwierdził                   | B. Jerzyło          |             | 12.07.17 | Nr rys w arch. |



|                        |                       |                            |                 |                       |                 |                       |                        |                           |
|------------------------|-----------------------|----------------------------|-----------------|-----------------------|-----------------|-----------------------|------------------------|---------------------------|
| <b>Pozycja</b>         | <b>Nazwa</b>          | <b>CHWYT HSK-A100</b>      |                 | <b>Il. szt.</b>       | <b>Materiał</b> | <b>Nr rys. części</b> | <b>Nr rys. w arch.</b> | <b>Uwagi:</b>             |
|                        |                       |                            |                 |                       |                 | <b>Nr normy</b>       |                        |                           |
| <b>Nr zespołu</b>      | <b>Liczba sztuk</b>   | <b>Nr kresl. zw.</b>       | <b>Znak</b>     | <b>Fotografia był</b> |                 |                       | <b>Rysunek</b>         | <b>Data</b>               |
|                        |                       |                            |                 |                       |                 |                       |                        |                           |
| <b>Podziałka 1 : 1</b> | <b>Zespół rys. Nr</b> | <b>Zest. przez rys. Nr</b> | <b>Arkusz 1</b> | <b>Sku'y do</b>       |                 |                       |                        |                           |
|                        |                       |                            | <b>il. ark.</b> |                       |                 |                       |                        |                           |
|                        | <b>Konstruktor</b>    | <b>B. BRZOSKA</b>          | <b>Dat</b>      | <b>21.09.12</b>       | <b>Wybra</b>    |                       |                        | <b>Nr rys. w archiwum</b> |
|                        | <b>Sprowadził</b>     | <b>B. JERZYŁO</b>          | <b>Dat</b>      | <b>21.09.12</b>       |                 | <b>HSK-A 100</b>      |                        | <b>K3-0258-</b>           |
|                        | <b>Zatwierdził</b>    | <b>B. JERZYŁO</b>          | <b>Dat</b>      | <b>21.09.12</b>       |                 |                       |                        |                           |



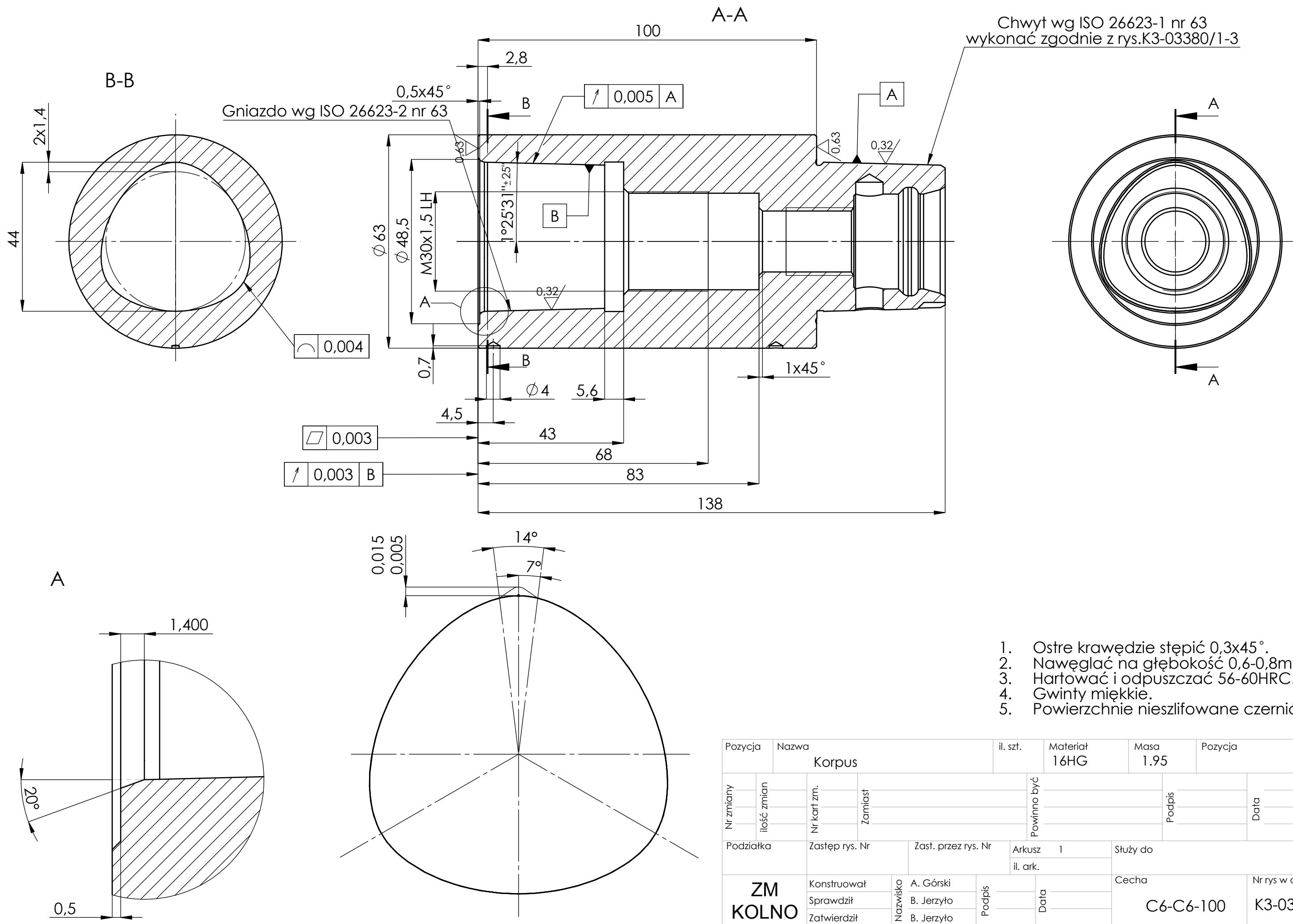
Otwór  $\phi 7,5$  fazować  $0,5 \times 45^\circ$ .

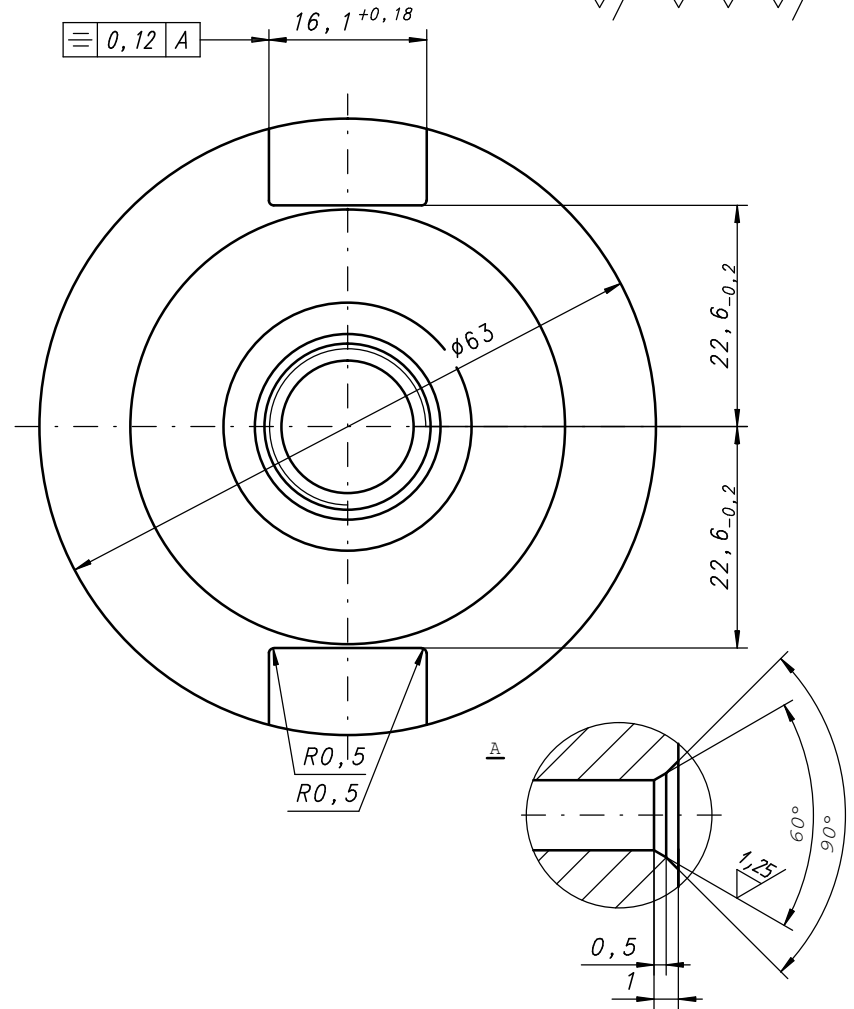



Zbieżność stożka 1:10.

Odchyłka stożka na długości tworzącej AT 3 - 0,003

|                   |                 |                     |                         |             |  |      |            |
|-------------------|-----------------|---------------------|-------------------------|-------------|--|------|------------|
| Pozycja           |                 | Nazwa               | CHWYT DIN 69893-HSK-A63 | Il. szt.    | Materiał                                       | Masa | Symbol/KTM |
| Nr zatwierdzonego | l. ark.         | Nr krt. zw.         | Zamiesz.                | Powinno być | Podpis   | Data |            |
| Podziałka 1:1     | Zastęp. rys. Nr | Zast. przez rys. Nr | Arkusz 1                | Sluży do    |  |      |            |
|                   |                 |                     | Il. ark.                |             |  |      |            |
|                   | Konstruował     | A. BRZÓSKA          | Podpis                  | 25.04.03    | Cecha<br><b>HSK-A63</b><br>Nr rys.<br>K3-01518 |      |            |
|                   | Sprawdził       | B. JERZYŃO          | Podpis                  | 25.04.03    |  |      |            |
|                   | Zatwierdził     | B. JERZYŃO          | Podpis                  | 25.04.03    |  |      |            |



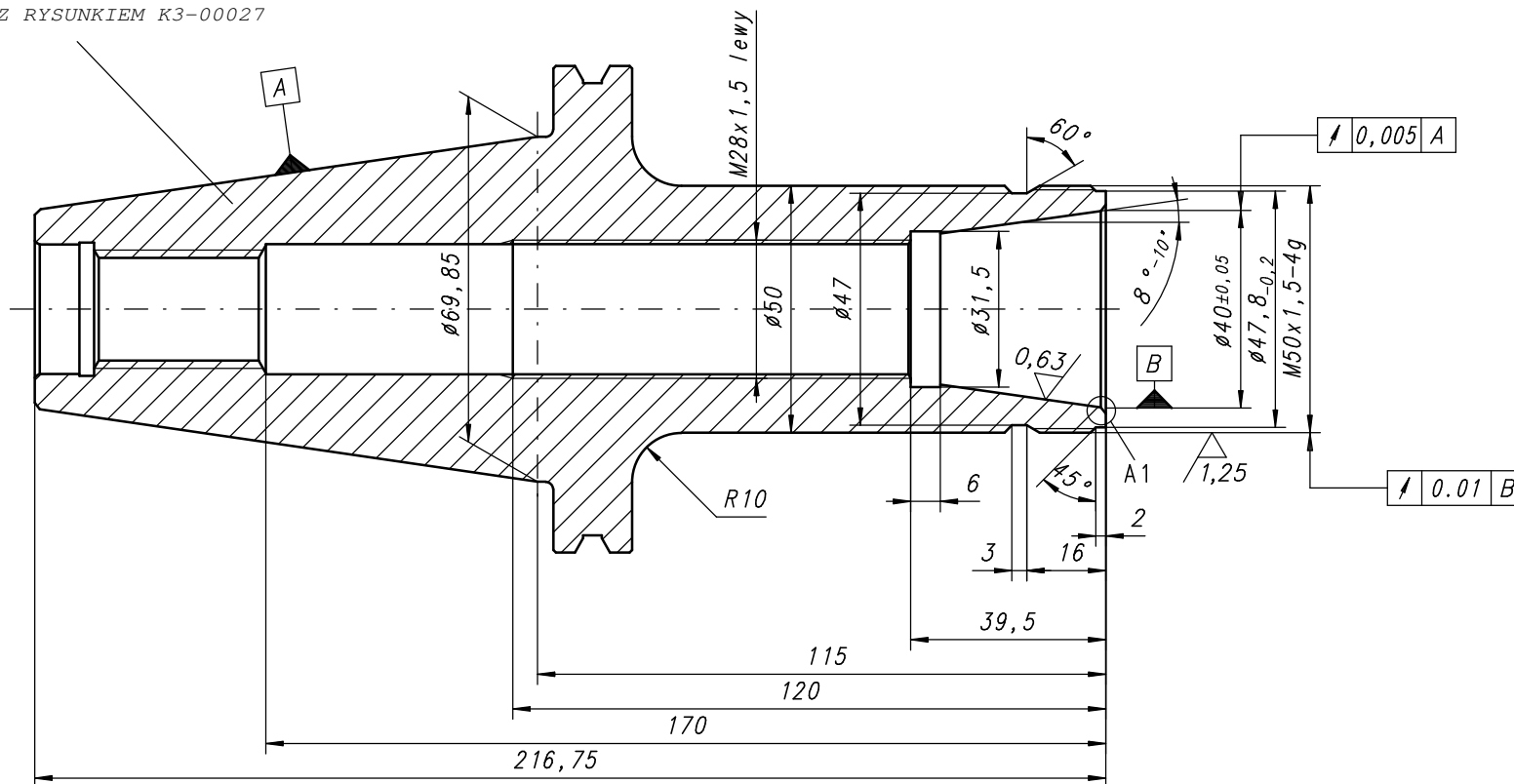


|  |             |                             |        |                 |              |                     |          |          |        |                         |            |  |
|--|-------------|-----------------------------|--------|-----------------|--------------|---------------------|----------|----------|--------|-------------------------|------------|--|
| Pozycja  |             | Nazwa                       |        |                 | Il. szt.     |                     | Materiał |          | Masa   |                         | Symbol/KTM |  |
|  |             | CHWYT 7:24 BT MAS 403 Nr 40 |        |                 |              |                     |          |          |        |                         |            |  |
| Nr zezany  | Ilość zezan | Nr kart. ze.                | Zamów. |                 | Pozostać być |                     |          |          | Podpis |                         | Data       |  |
|  |             |                             |        |                 |              |                     |          |          |        |                         |            |  |
| Podziałka 2:1  |             |                             |        | Zastap. rys. Nr |              | Zast. przez rys. Nr |          | Arkusz 1 |        | Stuży do                |            |  |
|  |             |                             |        |                 |              |                     |          | Il. ark. |        |                         |            |  |
|  <b>Z M KOLNO</b> |             | Konstruował                 |        | ELAZNY          |              | Podpis              |          | Cecha    |        | Nr rys.<br><br>K3-00033 |            |  |
|  |             | Sprawdził                   |        | B. JERZYŁO      |              | Data                |          |          |        |                         |            |  |
|  |             | Zatwierdził                 |        | B. JERZYŁO      |              | 29.08.98            |          |          |        |                         |            |  |
|  |             |                             |        |                 |              | 29.08.98            |          |          |        |                         |            |  |

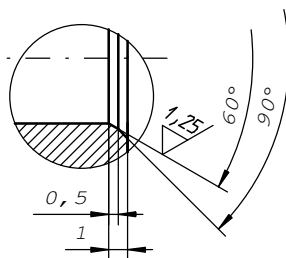


CHWYT DIN 69871/A WYKONAŁ  
ZGODNIE Z RYSUNKIEM K3-00027

2,5//1,25//0,63//



A1



- 1.Ostre krawędzie stępiać 0.3x45 .
- 2.Nawęgląć na g³ębokość 0.4-0.8 mm.
- 3.Gwinty miękkie.
- 4.Hartować i odpuszczać 56-60HRC.
- 5.Powierzchnie nieszlifowane czernić.

| Pozycja       | Nazwa         | Il. szt.            | Materiał    | Masa           | Symbol/KTM |
|---------------|---------------|---------------------|-------------|----------------|------------|
| 1             | KORPUS        | 1                   | 16HG        | 3,30           |            |
| Nr zmiany     | Nr kart. zm.  | Zam. iost.          | Powinno być | Podpis         | Data       |
|               |               |                     |             |                |            |
| Podziałka 1:1 | Zast. rys. Nr | Zast. przez rys. Nr | Arkusz 1    | Sluży do       |            |
|               |               |                     | Il. ark.    | 7617-50-40-130 |            |
|               | Konstruował   | A. BRZÓSKA          | Data        | Cecha          | Nr rys.    |
|               | Sprawdził     | B. JERZYŁO          |             |                |            |
|               | Zatwierdził   | B. JERZYŁO          |             |                |            |
|               |               |                     | 27.10.15    | U-6950/0       | K3-03211   |

---

---

**Polygonal taper interface with flange  
contact surface —**

**Part 2:  
Dimensions and designation of receivers**

*Interfaces à cône polygonal avec face d'appui —*

*Partie 2: Dimensions et désignation des nez de broche*



Reference number  
ISO 26623-2:2008(E)

© ISO 2008

**PDF disclaimer**

This PDF file may contain embedded typefaces. In accordance with Adobe's licensing policy, this file may be printed or viewed but shall not be edited unless the typefaces which are embedded are licensed to and installed on the computer performing the editing. In downloading this file, parties accept therein the responsibility of not infringing Adobe's licensing policy. The ISO Central Secretariat accepts no liability in this area.

Adobe is a trademark of Adobe Systems Incorporated.

Details of the software products used to create this PDF file can be found in the General Info relative to the file; the PDF-creation parameters were optimized for printing. Every care has been taken to ensure that the file is suitable for use by ISO member bodies. In the unlikely event that a problem relating to it is found, please inform the Central Secretariat at the address given below.



**COPYRIGHT PROTECTED DOCUMENT**

© ISO 2008

All rights reserved. Unless otherwise specified, no part of this publication may be reproduced or utilized in any form or by any means, electronic or mechanical, including photocopying and microfilm, without permission in writing from either ISO at the address below or ISO's member body in the country of the requester.

ISO copyright office  
Case postale 56 • CH-1211 Geneva 20  
Tel. + 41 22 749 01 11  
Fax + 41 22 749 09 47  
E-mail [copyright@iso.org](mailto:copyright@iso.org)  
Web [www.iso.org](http://www.iso.org)

Published in Switzerland

## Foreword

ISO (the International Organization for Standardization) is a worldwide federation of national standards bodies (ISO member bodies). The work of preparing International Standards is normally carried out through ISO technical committees. Each member body interested in a subject for which a technical committee has been established has the right to be represented on that committee. International organizations, governmental and non-governmental, in liaison with ISO, also take part in the work. ISO collaborates closely with the International Electrotechnical Commission (IEC) on all matters of electrotechnical standardization.

International Standards are drafted in accordance with the rules given in the ISO/IEC Directives, Part 2.

The main task of technical committees is to prepare International Standards. Draft International Standards adopted by the technical committees are circulated to the member bodies for voting. Publication as an International Standard requires approval by at least 75 % of the member bodies casting a vote.

ISO 26623-2 was prepared by Technical Committee ISO/TC 29, *Small tools*.

ISO 26623 consists of the following parts, under the general title *Polygonal taper interface with flange contact surface*:

- *Part 1: Dimensions and designation of shanks*
- *Part 2: Dimensions and designation of receivers*

## **Introduction**

The International Organization for Standardization (ISO) draws attention to the fact that it is claimed that compliance with this document may involve the use of a patent concerning the modular taper with ball track system.

ISO takes no position concerning the evidence, validity and scope of this patent right.

The holder of this patent right has assured ISO that he/she is willing to waive the exercise of this patent right throughout the world. In this respect, the statement of the holder of this patent right is registered with ISO. Information may be obtained from:

ISO Central Secretariat  
International Organization for Standardization (ISO)  
1, chemin de la Voie-Creuse, Case postale 56  
CH-1211 Geneva 20, Switzerland

Attention is drawn to the possibility that some of the elements in this document may be the subject of patent rights other than that identified above. ISO shall not be held responsible for identifying any or all such patent rights.

1

# Polygonal taper interface with flange contact surface —

## Part 2: Dimensions and designation of receivers

### 1 Scope

This part of ISO 26623 specifies the dimensions for a polygonal taper interface with flange contact surface: polygon-receivers for automatic and manual tool exchange to be applied on machine tools (e.g. turning machines, drilling machines, milling machines and turn/milling centres, as well as grinding machines). A range of receiver sizes is specified.

The torque is transmitted by form lock (polygon).

### 2 Normative references

The following referenced documents are indispensable for the application of this document. For dated references, only the edition cited applies. For undated references, the latest edition of the referenced document (including any amendments) applies.

ISO 2768-1, *General tolerances — Part 1: Tolerances for linear and angular dimensions without individual tolerance indications*

### 3 Dimensions

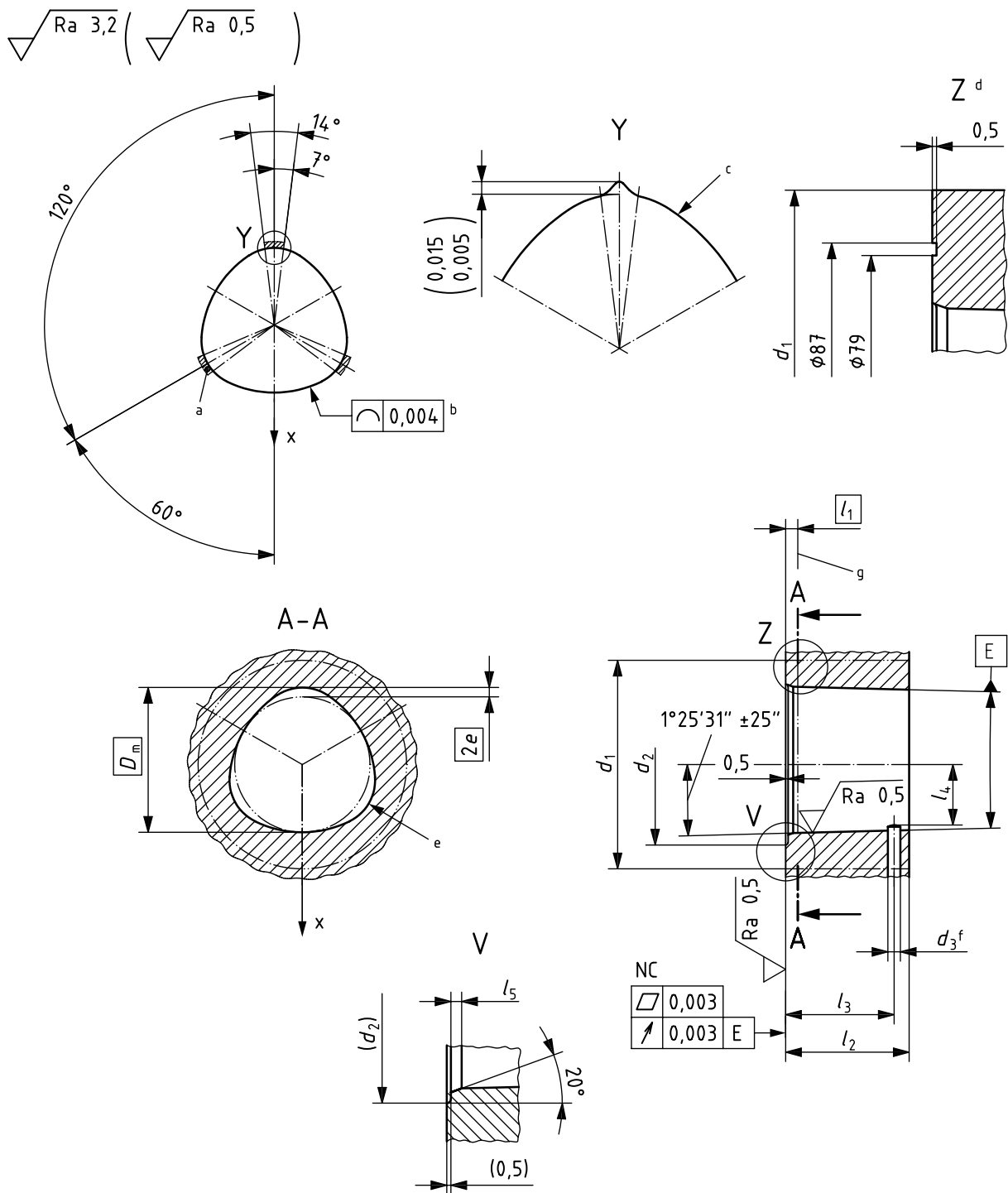
#### 3.1 General

Tolerancing of linear and angular dimensions not specified shall be of tolerance class “m” in accordance with ISO 2768-1.

#### 3.2 Polygon-receiver

The dimensions of polygon-receivers are shown in Figure 1 and given in Table 1.

Surface roughness in micrometres  
Dimensions in millimetres



a Form of profile from actual ground curve =  $+0,015$   
 $+0,005$  (sectioned areas).

b Theoretical polygon curve.

c Actual ground curve.

d Valid for size 80X only.

e Polygon curve.

b Position pin: the style of the position pin may have a different design than in this figure. In some cases, the position pin may be omitted.

g Gauge line.

Figure 1 — Polygon-receiver

Table 1 — Polygon-receiver dimensions

Dimensions in millimetres

| Nominal size  | 32            | 40            | 50             | 63             | 80             | 80X            |
|---------------|---------------|---------------|----------------|----------------|----------------|----------------|
| $d_1$ min.    | 32            | 40            | 50             | 63             | 80             | 100            |
| $d_2$         | 25,2          | 31,6          | 39,2           | 48,5           | 60,8           | 60,8           |
| $d_3$         | 2             | 2,5           | 3              | 4              | 5              | 5              |
| $D_m$         | 22            | 28            | 35             | 44             | 55             | 55             |
| $e$           | 0,7           | 0,9           | 1,12           | 1,4            | 2              | 2              |
| $l_1$         | 2,3           | 2,3           | 2,8            | 2,8            | 2,8            | 2,8            |
| $l_2 \pm 0,1$ | 18,4          | 23,4          | 29,4           | 37,4           | 47,4           | 47,4           |
| $l_3 \pm 0,2$ | 16,5          | 21            | 26             | 33,5           | 43             | 43             |
| $l_4$         | $9,4 \pm 0,1$ | $11,5 \pm ,2$ | $14,5 \pm 0,2$ | $18,5 \pm 0,2$ | $22,8 \pm 0,2$ | $22,8 \pm 0,2$ |
| $l_5 \pm 0,1$ | 1             | 1             | 1,4            | 1,4            | 1,4            | 1,4            |

## 4 Clamping force

The clamping system shall provide sufficient clamping force to ensure contact of the shank flange with the face of the receiver, as well as seating the taper by elastic deformation. The torque transmitting capacity of the interface is substantially determined by the size of the clamping force.

A guide to clamping forces for polygon-receivers is given in Annex A.

## 5 Designation

A polygon-receiver in accordance with this part of ISO 26623 shall be designated as follows:

- "Polygon-receiver";
- reference to this part of ISO 26623 (i.e. "ISO 26623-2");
- designation symbol "PSC";
- nominal size, in millimetres.

EXAMPLE Designation of a polygon-receiver of nominal size 32 mm:

**Polygon-receiver ISO 26623-2 - PSC 32**



## Annex A (informative)

### Recommendations for use and application

#### A.1 Clamping system

The clamping system should be specified by the manufacturer of the receiver or machine tool spindle.

#### A.2 Clamping forces

Variations of taper shank and receiver size within the specified limits of tolerances will cause the portion of the clamping force acting on the flange surface to vary. The flange contact surface is decisive for the stiffness of the polygon taper surface. However, the clamping forces given in Table A.1 will ensure that the portion of acting on the flange surface is never less than 80 % of the total.

**Table A.1 — Range of clamping forces**

| Nominal size  | 32 | 40 | 50 | 63 | 80 | 80X |
|---|----|----|----|----|----|-----|
| Clamping force, kN  | 15 | 20 | 25 | 30 | 40 | 40  |
| Lower clamping forces can be sufficient when operational loads are low (e.g. cutting and feed forces in finish machining).<br>Conversely, higher clamping forces can be required when high operational loads are encountered (e.g. cutting and feed forces in heavy machining). |    |    |    |    |    |     |

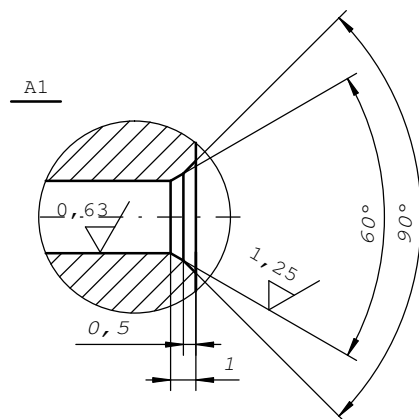
#### A.3 Information about speeds and torques

The manufacturer should provide information regarding permissible speeds and torque-transmitting capacities.





2,5 // 1,25 // 0,63 //

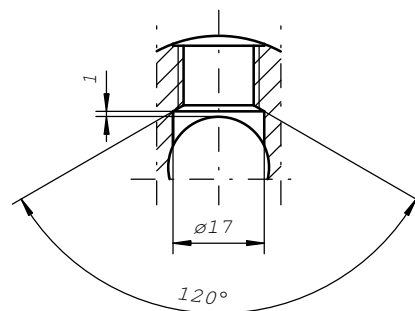
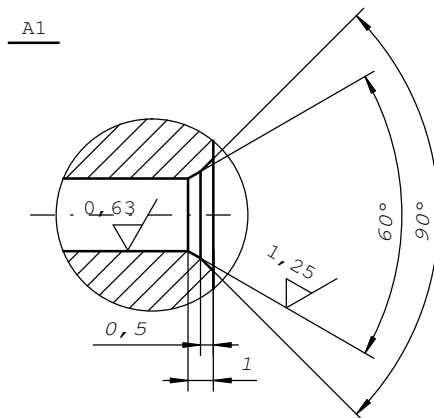
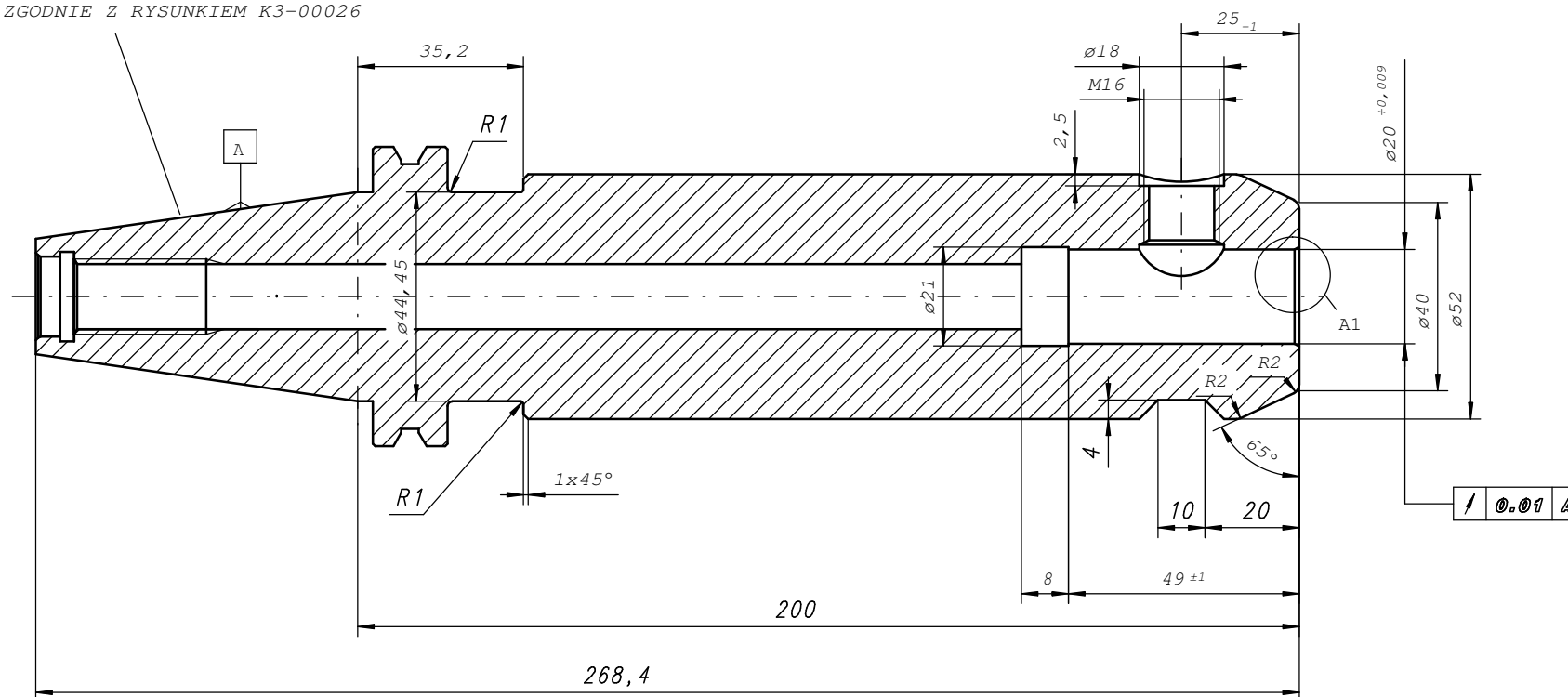


1. Ostre krawędzie stępiæ 0.3x45 .
2. Gwinty miêkkie.
3. Nawêglac na g³êbokosc 0.4-0.8 mm.
4. Hartowac i odpuszczac 56-60HRC.
5. Powierzchnie nieszlifowane czerniac.

|          |  |             |  |              |  |          |  |             |  |            |  |
|----------|--|-------------|--|--------------|--|----------|--|-------------|--|------------|--|
| Pozycja  |  | Nazwa       |  | Il. szt.     |  | Materiał |  | Masa        |  | Symbol/KTM |  |
| 1        |  | KORPUS      |  | 1            |  | 16HG     |  | 1, 60       |  |            |  |
| Nr zainy |  | Ilość zmian |  | Nr kart. zm. |  | Zamiat   |  | Powinno być |  | Podpis     |  |
|          |  |             |  |              |  |          |  |             |  |            |  |
|          |  |             |  |              |  |          |  |             |  |            |  |
|          |  |             |  |              |  |          |  |             |  |            |  |
|          |  |             |  |              |  |          |  |             |  |            |  |
|          |  |             |  |              |  |          |  |             |  |            |  |
|          |  |             |  |              |  |          |  |             |  |            |  |
|          |  |             |  |              |  |          |  |             |  |            |  |
|          |  |             |  |              |  |          |  |             |  |            |  |
|          |  |             |  |              |  |          |  |             |  |            |  |
|          |  |             |  |              |  |          |  |             |  |            |  |
|          |  |             |  |              |  |          |  |             |  |            |  |
|          |  |             |  |              |  |          |  |             |  |            |  |
|          |  |             |  |              |  |          |  |             |  |            |  |
|          |  |             |  |              |  |          |  |             |  |            |  |
|          |  |             |  |              |  |          |  |             |  |            |  |
|          |  |             |  |              |  |          |  |             |  |            |  |
|          |  |             |  |              |  |          |  |             |  |            |  |
|          |  |             |  |              |  |          |  |             |  |            |  |
|          |  |             |  |              |  |          |  |             |  |            |  |
|          |  |             |  |              |  |          |  |             |  |            |  |
|          |  |             |  |              |  |          |  |             |  |            |  |
|          |  |             |  |              |  |          |  |             |  |            |  |
|          |  |             |  |              |  |          |  |             |  |            |  |
|          |  |             |  |              |  |          |  |             |  |            |  |
|          |  |             |  |              |  |          |  |             |  |            |  |
|          |  |             |  |              |  |          |  |             |  |            |  |
|          |  |             |  |              |  |          |  |             |  |            |  |
|          |  |             |  |              |  |          |  |             |  |            |  |
|          |  |             |  |              |  |          |  |             |  |            |  |
|          |  |             |  |              |  |          |  |             |  |            |  |
|          |  |             |  |              |  |          |  |             |  |            |  |
|          |  |             |  |              |  |          |  |             |  |            |  |
|          |  |             |  |              |  |          |  |             |  |            |  |
|          |  |             |  |              |  |          |  |             |  |            |  |
|          |  |             |  |              |  |          |  |             |  |            |  |
|          |  |             |  |              |  |          |  |             |  |            |  |
|          |  |             |  |              |  |          |  |             |  |            |  |
|          |  |             |  |              |  |          |  |             |  |            |  |
|          |  |             |  |              |  |          |  |             |  |            |  |
|          |  |             |  |              |  |          |  |             |  |            |  |
|          |  |             |  |              |  |          |  |             |  |            |  |
|          |  |             |  |              |  |          |  |             |  |            |  |
|          |  |             |  |              |  |          |  |             |  |            |  |
|          |  |             |  |              |  |          |  |             |  |            |  |
|          |  |             |  |              |  |          |  |             |  |            |  |
|          |  |             |  |              |  |          |  |             |  |            |  |
|          |  |             |  |              |  |          |  |             |  |            |  |
|          |  |             |  |              |  |          |  |             |  |            |  |
|          |  |             |  |              |  |          |  |             |  |            |  |
|          |  |             |  |              |  |          |  |             |  |            |  |
|          |  |             |  |              |  |          |  |             |  |            |  |
|          |  |             |  |              |  |          |  |             |  |            |  |
|          |  |             |  |              |  |          |  |             |  |            |  |
|          |  |             |  |              |  |          |  |             |  |            |  |
|          |  |             |  |              |  |          |  |             |  |            |  |
|          |  |             |  |              |  |          |  |             |  |            |  |
|          |  |             |  |              |  |          |  |             |  |            |  |
|          |  |             |  |              |  |          |  |             |  |            |  |
|          |  |             |  |              |  |          |  |             |  |            |  |
|          |  |             |  |              |  |          |  |             |  |            |  |
|          |  |             |  |              |  |          |  |             |  |            |  |
|          |  |             |  |              |  |          |  |             |  |            |  |
|          |  |             |  |              |  |          |  |             |  |            |  |
|          |  |             |  |              |  |          |  |             |  |            |  |
|          |  |             |  |              |  |          |  |             |  |            |  |
|          |  |             |  |              |  |          |  |             |  |            |  |
|          |  |             |  |              |  |          |  |             |  |            |  |
|          |  |             |  |              |  |          |  |             |  |            |  |
|          |  |             |  |              |  |          |  |             |  |            |  |
|          |  |             |  |              |  |          |  |             |  |            |  |
|          |  |             |  |              |  |          |  |             |  |            |  |
|          |  |             |  |              |  |          |  |             |  |            |  |
|          |  |             |  |              |  |          |  |             |  |            |  |
|          |  |             |  |              |  |          |  |             |  |            |  |
|          |  |             |  |              |  |          |  |             |  |            |  |
|          |  |             |  |              |  |          |  |             |  |            |  |
|          |  |             |  |              |  |          |  |             |  |            |  |
|          |  |             |  |              |  |          |  |             |  |            |  |
|          |  |             |  |              |  |          |  |             |  |            |  |
|          |  |             |  |              |  |          |  |             |  |            |  |
|          |  |             |  |              |  |          |  |             |  |            |  |
|          |  |             |  |              |  |          |  |             |  |            |  |
|          |  |             |  |              |  |          |  |             |  |            |  |
|          |  |             |  |              |  |          |  |             |  |            |  |
|          |  |             |  |              |  |          |  |             |  |            |  |
|          |  |             |  |              |  |          |  |             |  |            |  |
|          |  |             |  |              |  |          |  |             |  |            |  |
|          |  |             |  |              |  |          |  |             |  |            |  |

2,5/1,25/0,63/

CHWYT DIN 68871/A WYKONAĆ  
ZGODNIE Z RYSUNKIEM K3-00026

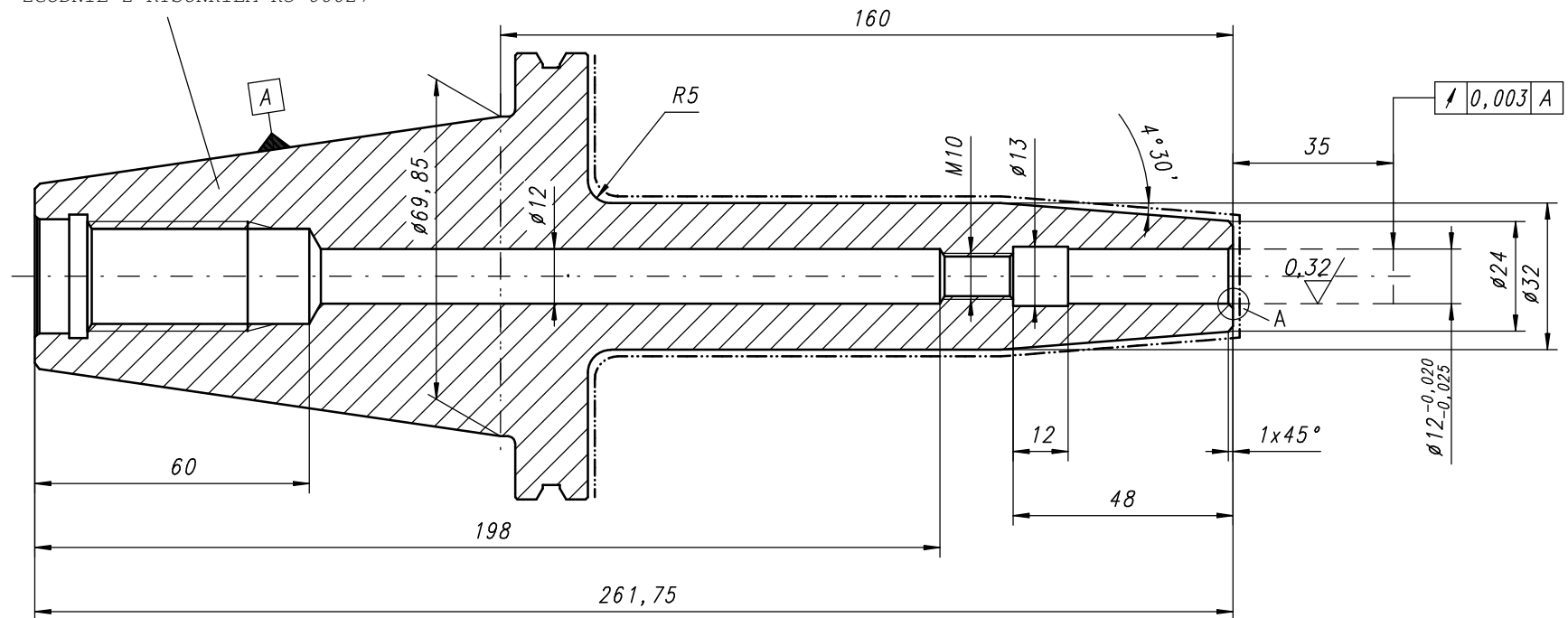


1. Ostre krawędzie stępiać 0.3x45 .
2. Gwinty miękkie.
3. Nawęgląć na g³ębokość 0.4-0.8 mm.
4. Hartować i odpuszczać 56-60HRC.
5. Powierzchnie nieszlifowane czernić.

| Pozycja       | Nazwa         | Il. szt.            | Materiał    | Masa           | Symbol/KTM |
|---------------|---------------|---------------------|-------------|----------------|------------|
| 1             | KORPUS        | 1                   | 16HG        | 3,35           | W-0493/0   |
| Nr zmiany     | Nr kart. zm.  | Zam. iost.          | Powinno być | Podpis         | Data       |
| 1             |               |                     |             |                |            |
| Podziałka 1:1 | Zast. rys. Nr | Zast. przez rys. Nr | Arkusz 1    | Sluży do       |            |
|               |               |                     | Il. ark.    | 7625-40-20-200 |            |
|               | Konstruował   | ELAZNY              | Podpis      | 01,10,99       |            |
|               | Sprawdził     | B. JERZYŁO          | Data        | 01,10,99       |            |
|               | Zatwierdził   | B. JERZYŁO          |             | 01,10,99       |            |
|               |               |                     |             |                | Nr rys.    |
|               |               |                     |             |                | K3-00588   |

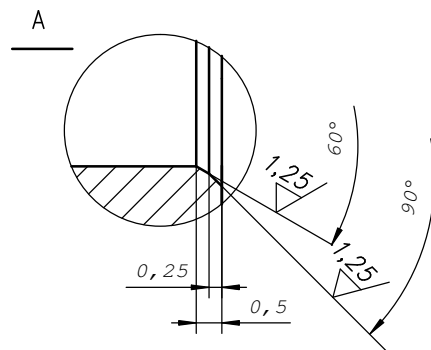
2,5/ / 1,25/ 0,32/ /

CHWYT DIN 69871/A WYKONAĆ  
ZGODNIE Z RYSUNKIEM K3-00027




Powierzchnie oznaczone linią ..... przetoczyć po obróbce cieplnej.

Chropowość 1,25/

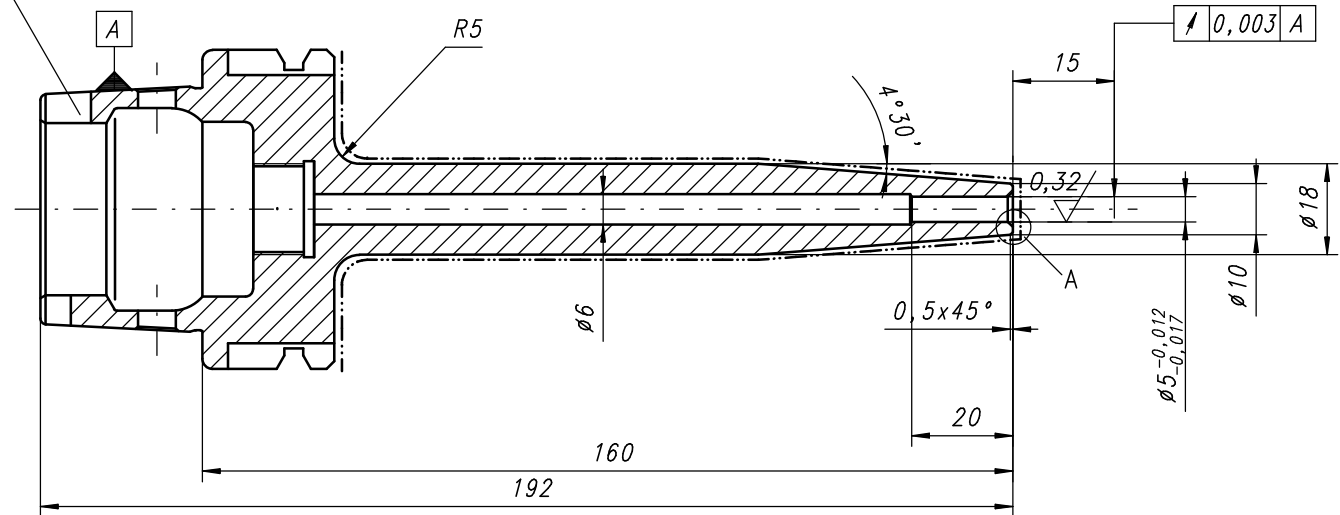


- 1.Ostre krawędzie stępić 0.3x45 .
- 2.Hartować i odpuszczać 50-54HRC.
- 3.Powierzchnie nieszlifowane ørutować.

|  |           |                 |            |                     |               |                 |                       |            |                         |
|--|-----------|-----------------|------------|---------------------|---------------|-----------------|-----------------------|------------|-------------------------|
| Pozycja<br>1   |           | Nazwa<br>KORPUS |            |                     | Il. szt.<br>1 | Materiał<br>WCL | Masa<br>3,35          | Symbol/KTM |                         |
| Nr zmiany  | Il. zmian | Nr kart. zm.    |            |                     | Zmiana        |                 | Powinno być           | Podpis     | Data                    |
|  |           |                 |            |                     |               |                 |                       |            |                         |
| Podziałka 1:1  |           | Zastęp. rys. Nr |            | Zast. przez rys. Nr |               | Arkusz 1        | Służy do              |            |                         |
|  |           |                 |            |                     |               | Il. ark.        | 7630-50-12-160        |            |                         |
|  Z M<br>KOLNO |           | Konstruował     | A. BRZÓSKA |                     | Podpis        | Data            | Cecha<br><br>C-0346/0 |            | Nr rys.<br><br>K3-02831 |
|  |           | Sprawdził       | B. JERZYŃO |                     |               | 17.12.12        |                       |            |                         |
|  |           | Zatwierdził     | B. JERZYŃO |                     |               | 17.12.12        |                       |            |                         |

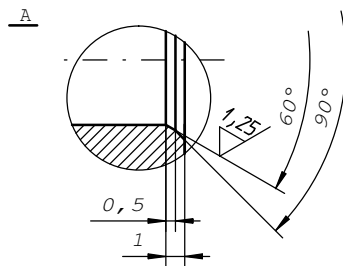
Chwyt HSK-A63 wykonać wg. rys. K3-01518

2,5/1,25/0,63/



Powierzchnie oznaczone linią - - - - - przetoczyć po obróbce cieplnej.

Chropowość 1,25/



Wyważać: G2,5 ; 20 000obr/min.

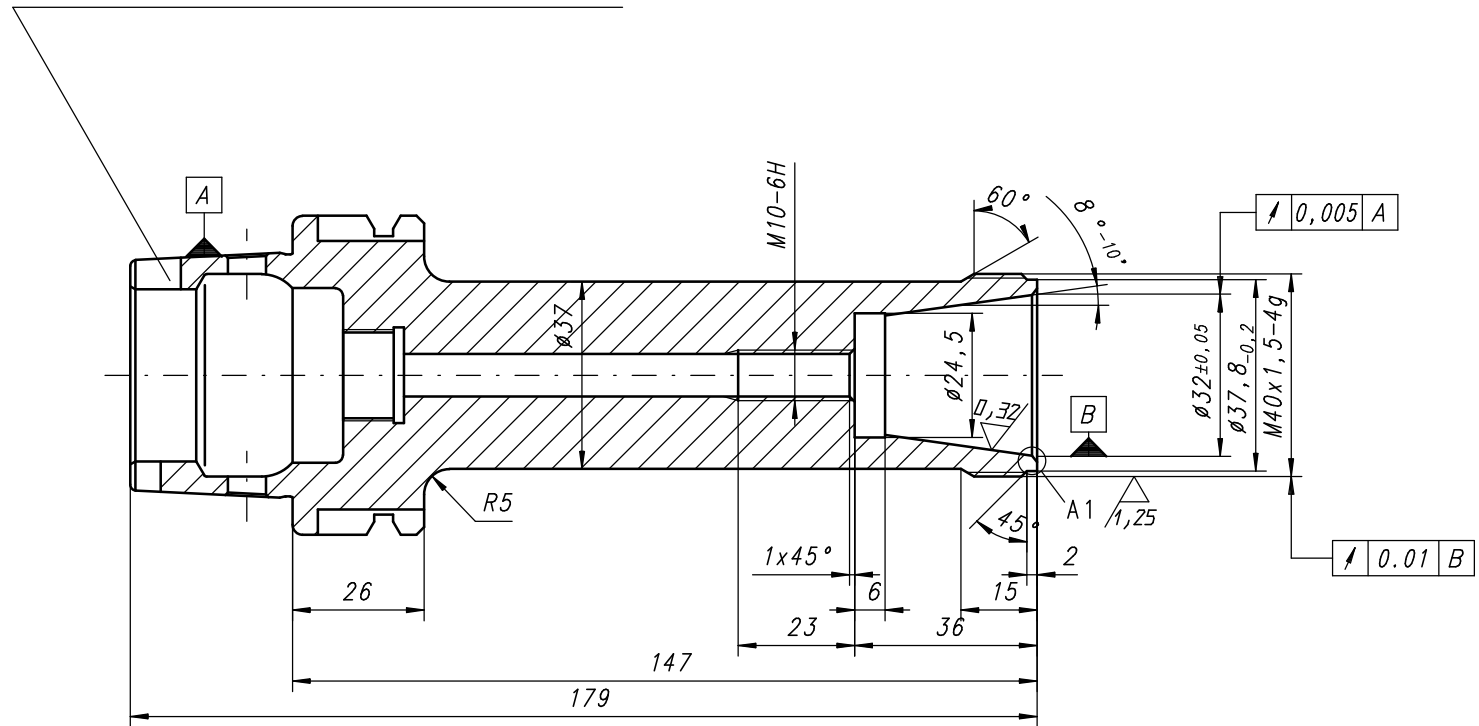
1. Ostre krawędzie stępić 0.3x45 .
2. Hartować i odpuszczać 50-54 HRC.
3. Powierzchnie nieszlifowane ørutować.

|               |   |                     |            |             |                  |
|---------------|---|---------------------|------------|-------------|------------------|
| Pozycja       | Nazwa   | Il. szt.            | Materiał   | Masa        | Symbol/KTM       |
|               | OPRKA FREZARSKA<br>Z TERMICZNYM MOCOWANIEM NARZĘDZI |                     | WCL        | 0,90        | 0642 176 342 063 |
| Nr zmiany     | Il. szt. zmian                                      | Nr kart. zm.        | Zam. zast. | Powinno być | Podpis           |
|               |   |                     |            |             |                  |
| Podziałka 1:1 | Zast. rys. Nr                                       | Zast. przez rys. Nr | Arkusz 1   | Sluży do    |                  |
|               |   |                     | Il. ark.   |             |                  |
|               | Konstruował   | A. BRZÓSKA          | Podpis     | 03.12.12    | 7634-63-5-160    |
|               | Sprawdził   | B. JERZYŃO          | Podpis     | 03.12.12    |                  |
|               | Zatwierdził   | B. JERZYŃO          | Podpis     | 03.12.12    |                  |
| Nr rys.       |   |                     |            |             | K3-02724         |

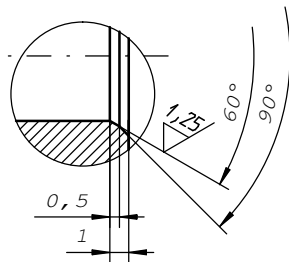




Chwyt HSK-A63 wykonać wg.rys. K3-01518



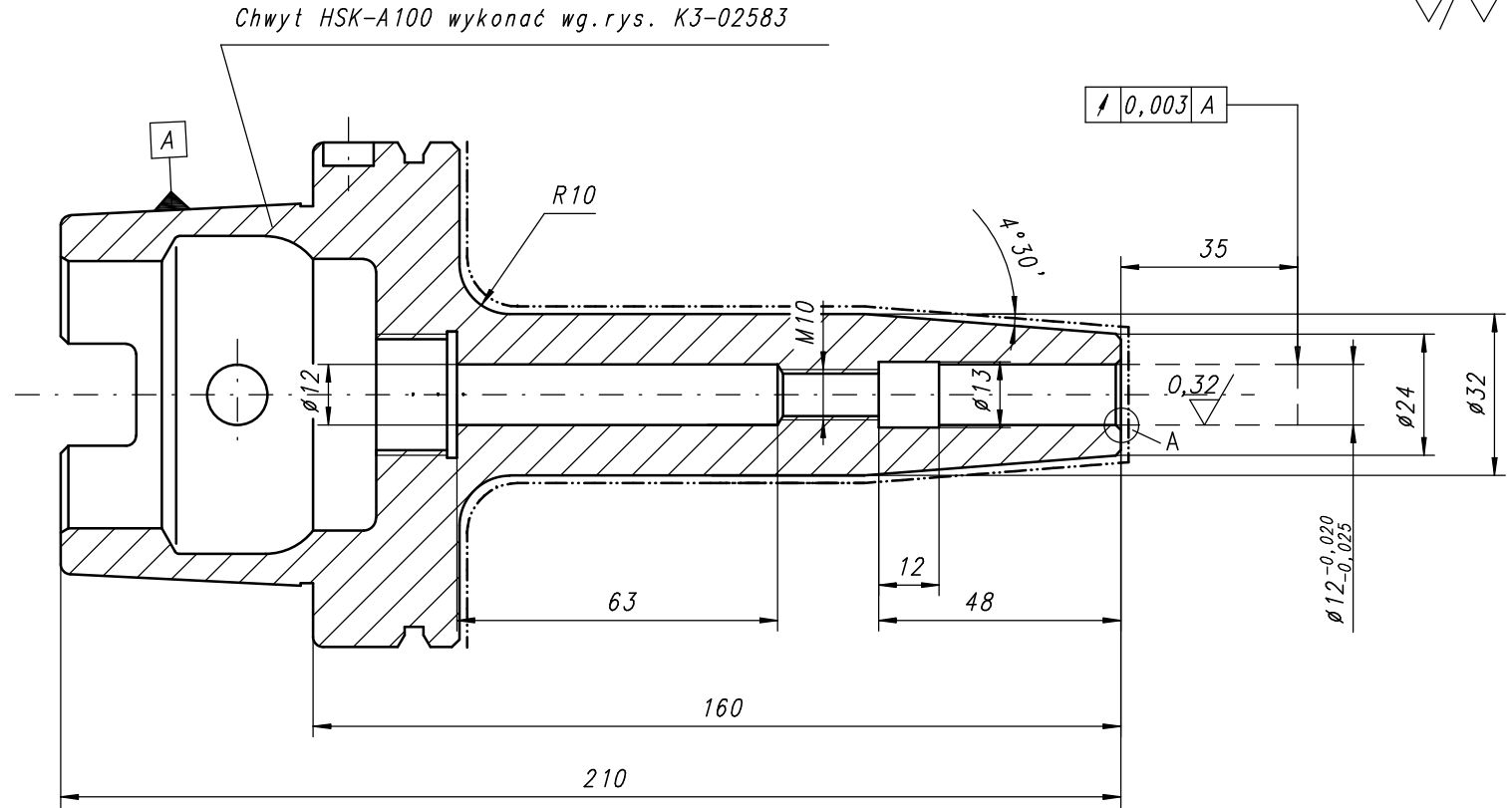
A1



- 1.Ostre krawędzie stępią 0.3x45 .
- 2.Nawęglää na g³ębokoää 0.4-0.8 mm.
- 3.Gwinty miêkkie.
- 3.Hartowaæ i odpuszczaa 56-60HRC.
- 4.Powierzchnie nieszlifowane czernia.

| Pozycja       | Nazwa           | Il. szt.            | Materiał    | Masa           | Symbol/KTM |
|---------------|-----------------|---------------------|-------------|----------------|------------|
| 1             | KORPUS          | 1                   | 18H2N2      | 1,45           |            |
| Nr zmiany     | Nr kart. zm.    | Zam. iost.          | Powinno być | Podpis         | Data       |
|               |                 |                     |             |                |            |
| Podziałka 1:1 | Zastap. rys. Nr | Zast. przez rys. Nr | Arkusz 1    | Sluży do       |            |
|               |                 |                     | Il. ark.    | 7887-63-32-160 |            |
|               | Konstruował     | A. BRZÓSKA          | Podpis      | Data           | Nr rys.    |
|               | Sprawdził       | B. JERZYŁO          |             | 29.12.08       |            |
|               | Zatwierdził     | B. JERZYŁO          |             | 29.12.08       |            |
|               |                 |                     |             | Cecha          |            |
|               |                 |                     |             | W-4983/0       | K3-02131   |

2,5//1,25/0,63//

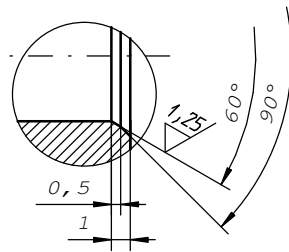


Powierzchnie oznaczone linią - - - - - przetoczyć po obróbce cieplnej.

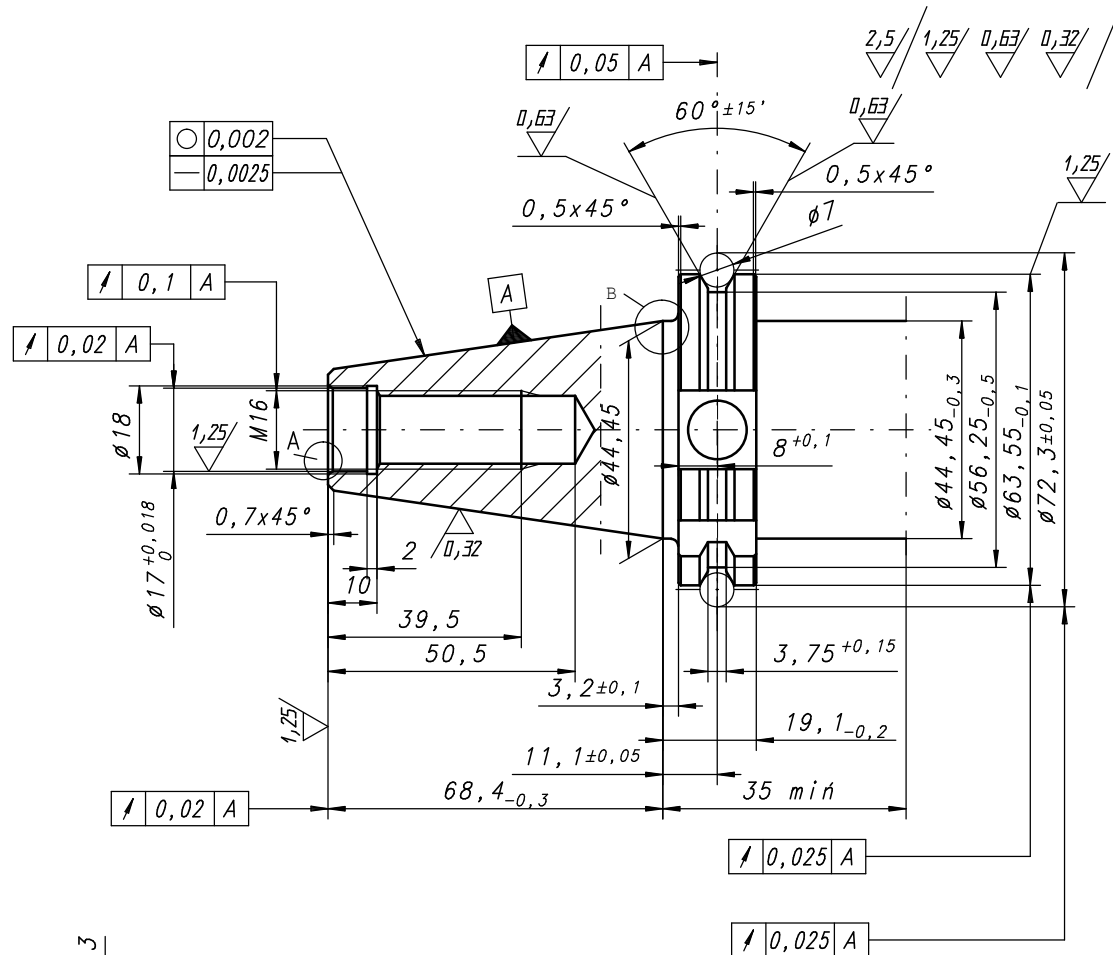
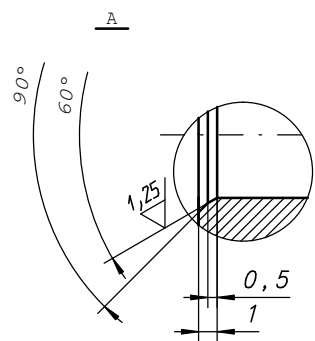
Chropowość 1,25/

- 1.Ostre krawędzie stępieć 0.3x45 .
- 2.Hartować i odpuszczać 50-54HRC.
- 3.Powierzchnie nieszlifowane ørutować.

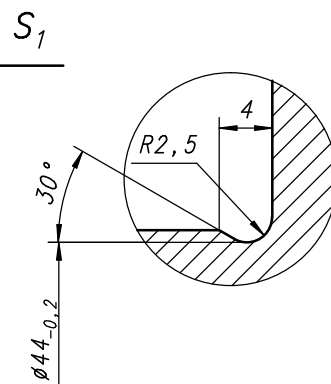
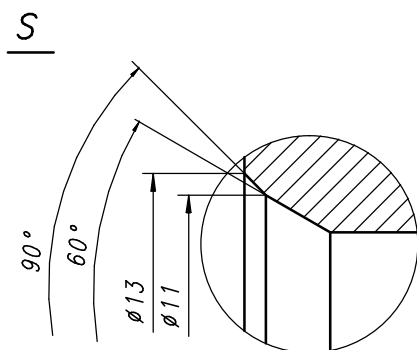
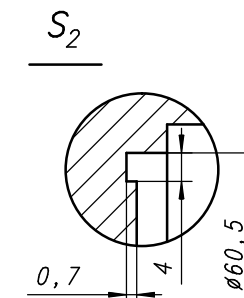
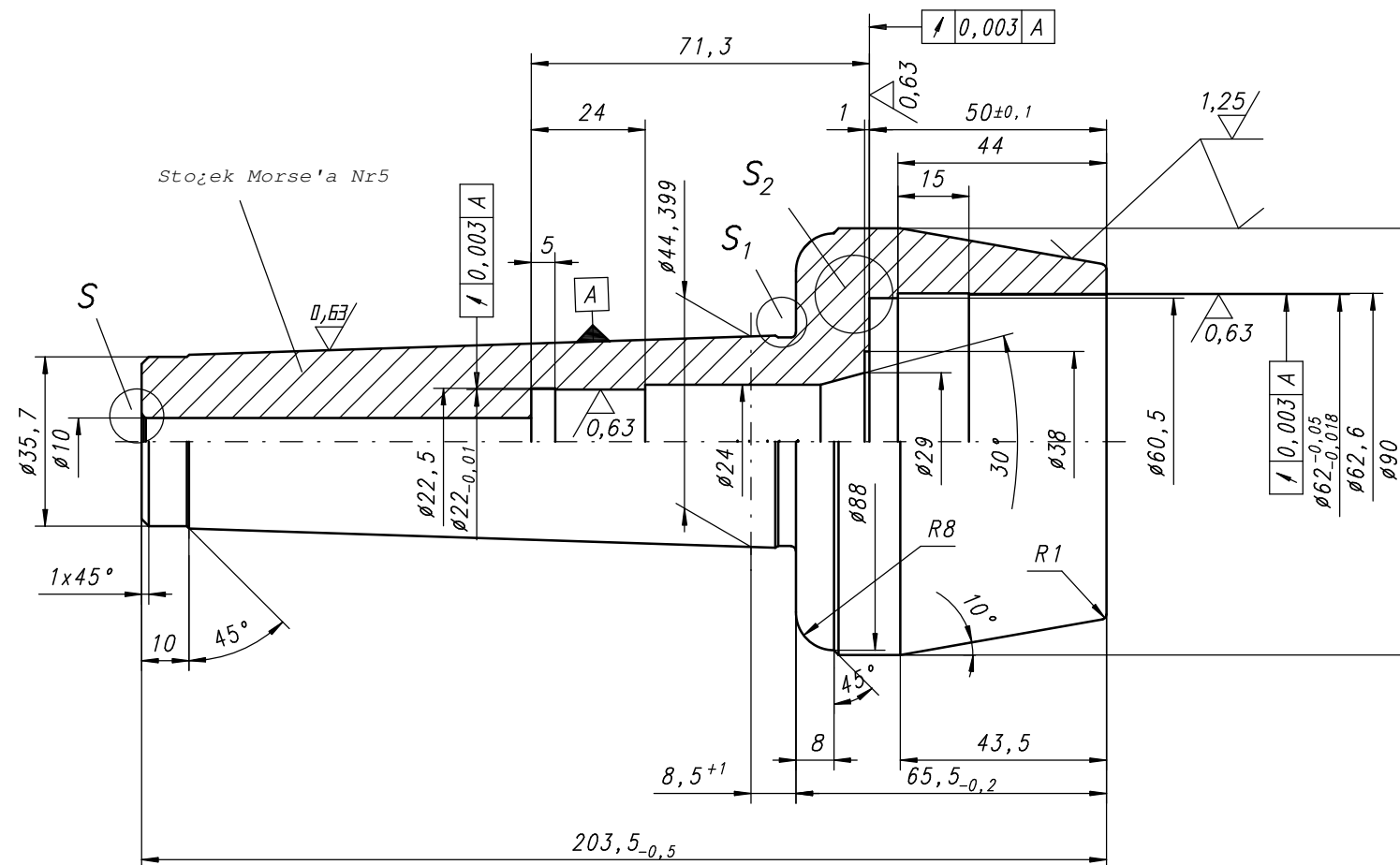
A1




| Pozycja       | Nazwa         | Il. szt.            | Materiał    | Masa            | Symbol/KTM |
|---------------|---------------|---------------------|-------------|-----------------|------------|
| 1             | KORPUS        | 1                   | WCL         | 2,60            |            |
| Nr zainst.    | Nr kart. ze.  | Zainst.             | Powinno być | Podpis          | Data       |
|               |               |                     |             |                 |            |
| Podziałka 1:1 | Zast. rys. Nr | Zast. przez rys. Nr | Arkusz 1    | Sluży do        |            |
|               |               |                     | Il. ark.    | 7634-100-12-160 |            |
|               | Konstruował   | A. BRZÓSKA          | Data        | 23.11.12        | C-0246/0   |
|               | Sprawdził     | B. JERZYŃO          | Data        | 23.11.12        |            |
|               | Zatwierdził   | B. JERZYŃO          | Data        | 23.11.12        |            |
| Nr rys.       |               |                     |             |                 | K3-02688   |



|               |               |                                 |                 |                     |          |          |       |             |          |      |            |        |      |
|---------------|---------------|---------------------------------|-----------------|---------------------|----------|----------|-------|-------------|----------|------|------------|--------|------|
| Pozycja       | Nazwa         | CHWYT 7:24 wg DIN 69871/A Nr 40 |                 |                     |          |          |       | Il. szt.    | Materiał | Masa | Symbol/KTM |        |      |
| Nr zainy      | Il.łoż. zmian | Nr karł. zm.                    | Zawiosł         |                     |          |          |       | Fawiana być |          |      |            | Podpis | Data |
|               |               |                                 |                 |                     |          |          |       |             |          |      |            |        |      |
| Podziałka 1:1 |               |                                 | Zastop. rys. Nr | Zast. przez rys. Nr |          | Arkusz 1 |       | Służy do    |          |      |            |        |      |
|               |               |                                 |                 |                     |          | Il. ark. |       |             |          |      |            |        |      |
|               |               | Konstruował                     | A. BRZÓSKA      | Podpis              | Data     |          | Cecha |             | DIN-40   |      | Nr rys.    |        |      |
| Z M KOLNO     |               | Sprawdził                       | B. JERZYŹO      |                     | 28.03.98 |          |       |             |          |      |            |        |      |
|               |               | Zatwierdził                     | B. JERZYŹO      |                     | 28.03.98 |          |       |             |          |      |            |        |      |
|               |               |                                 |                 |                     | 28.03.98 |          |       |             |          |      | K3-00026   |        |      |



- |  |             |                 |               |  |                     |            |                  |      |                          |  |                            |  |
|--|-------------|-----------------|---------------|--|---------------------|------------|------------------|------|--------------------------|--|----------------------------|--|
| Pozycja<br>1   |             | Nazwa<br>KORPUS |               |  | Il. szt.<br>1       |            | Materiał<br>16HG |      | Masa<br>2,77             |  | Symbol/KTM                 |  |
| Nr zleńy   | Ilość zleńy | Nr kart. zleńy  | Zawias        |  |                     | Powinno by |                  |      | Podpis                   |  | Data                       |  |
|  |             |                 |               |  |                     |            |                  |      |                          |  |                            |  |
| Podziałka 1:1  |             |                 | Zast. rys. Nr |  | Zast. przez rys. Nr |            | Arkusz 1         |      | Służy do                 |  |                            |  |
|  |             |                 |               |  |                     |            | Il. ark.         |      | 8811-5R, 8814-5R         |  |                            |  |
|  <b>Z M KOLNO</b> |             |                 | Konstruował   |  | A. BRZÓSKA          |            | Podpis           | Data | Cecha<br><b>W-4124/0</b> |  | Nr rys.<br><b>K3-02009</b> |  |
|  |             |                 | Sprawdził     |  | S. RYDEL            |            |                  |      |                          |  |                            |  |
|  |             |                 | Zatwierdził   |  | B. JERZYŃO          |            |                  |      |                          |  |                            |  |
|  |             |                 |               |  |                     |            |                  |      |                          |  |                            |  |